

TIMEA residence



**Apartamente
complet
utilate**



**Parc de joacă
pentru copii**



**Parcare
pentru fiecare
apartament**

**Prețuri începând de la
44.300 Euro
cu TVA inclus**



**Pentru angajații KANAL D
mobilierul de bucătărie este gratuit.**



Apartmentul tău de la 200Euro pe lună!

O nouă viață în Prelungirea Ghencea

- Garsoniere**
- 2 camere**
- Penthouse**

TIMEA RESIDENCE

**+4 0725.084.236
021.210.20.65**



PREZENTARE PROIECT

TIMEA RESIDENCE – Localizare

Ansamblul rezidential Timea Residence este compus din 2 blocuri cu regim de inaltime P+2E+E3 Mansardat+Mansarda situat in zona de Vest a orasului Bucuresti, in cartierul Drumul Taberei - Prelungirea Ghencea.

In vecinatatea terenului exista vile si apartamente nou construite, transport in comun si supermarket-uri.

Proiectul Timea Residence este construit pe un teren in suprafata de aproximativ 2000 mp, si cuprinde un numar total de 32 de apartamente, cate 4 apartamente pe etaj si nu in ultimul rand va fi dotat cu un numar de 40 parcarilor exterioare si un loc de joaca pentru copii.

TIPURI DE APARTAMENT

Timea Residence ofera 10 tipuri de apartamente de 2 si 3 camere.

BLOC A

PARTER Apartamente Tip A1, A2, A3, A4

ETAJ 1 Apartamete Tip A5, A6, A7, A8

ETAJ 2 Apartamente TIP A9, A10, A11, A12,

MANSARDA 1 Apartamnete Tip A13, A14, A15, A16

BLOC B

PARTER Apartamente Tip B1, B2, B3, B4

ETAJ 1 Apartamete Tip B5, B6, B7, B8

ETAJ2 Apartamente Tip B9, B10, B1, B12

MANSARDA 1 Apartamnete Tip B13, B14, B15, B16

Descriere tipuri apartamente :

4 garsoniere★

20 apartamente cu doua camere★

8 apartamente cu 3 camere★

TIP 1 (A1, B1) garsoniere cu suprafata totala construita de 66,36mp

TIP 2 (A2, A6, A10, B2, B6, B10) si **TIP 3** (A3, A7, A11, B3, B7, B11) au in componenta 2 camere cu o suprafata totala construita de 79,41mp

TIP 4 (A4, B4) garsoniere cu suprafata totala construita de 64,91mp

TIP 5 (A5, A9, B5, B9) au in componenta 2 camere cu suprafata totala construita de 71.57mp

TIP 6 (A8, A12, B8, B12) au in componenta 2 camere cu o suprafata totala construita de 70.39mp

TIP 7 (A13, B13) apartamente duplex cu o suprafata totala construita de 124.86mp avand in componenta 3 camere.

TIP 8 (A14, B14) apartamente duplex cu o suprafata totala construita de 137.36mp avand in componenta 3 camere.

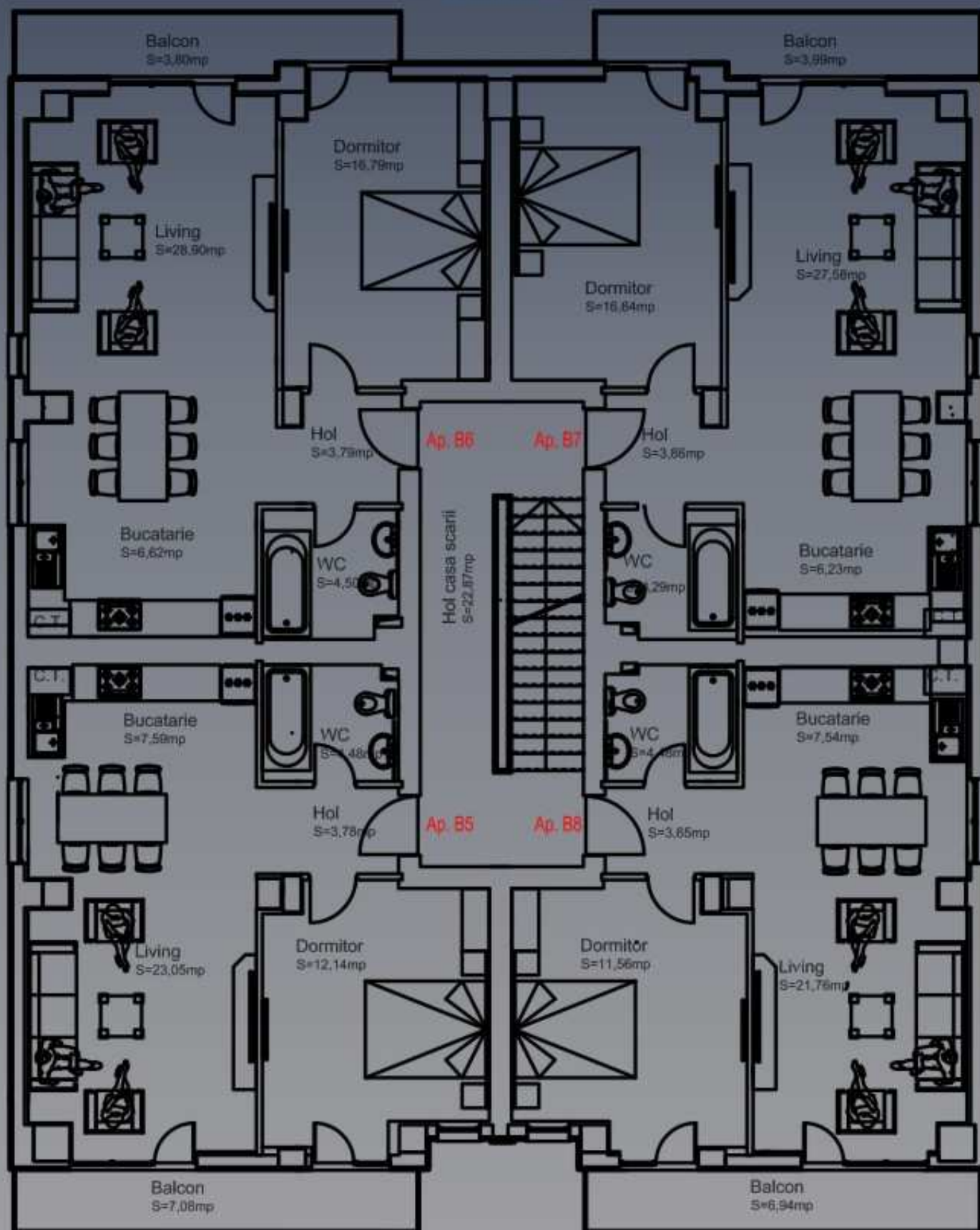
TIP 9 (A15, B15) apartamente duplex cu o suprafata totala construita de 132.80mp avand in componenta 3 camere.

TIP 10 (A16, B16) apartamente duplex cu o suprafata totala construita de 123.47mp avand in componenta 3 camere.

FINISAJE

Finisaj exterior: cladire izolata la exterior cu polistiren expandat, ferestre din PVC cu geam termopan, tigla metalica.

Finisaj interior: apartamentele se predau cu peretii din Beton Celular Autoclavizat, tavanele din rigips, instalatie electrica cu intrerupatoare si priza montate, instalatie de incalzire cu centrala proprie de apartament, usa metalica la intrare in apartament.

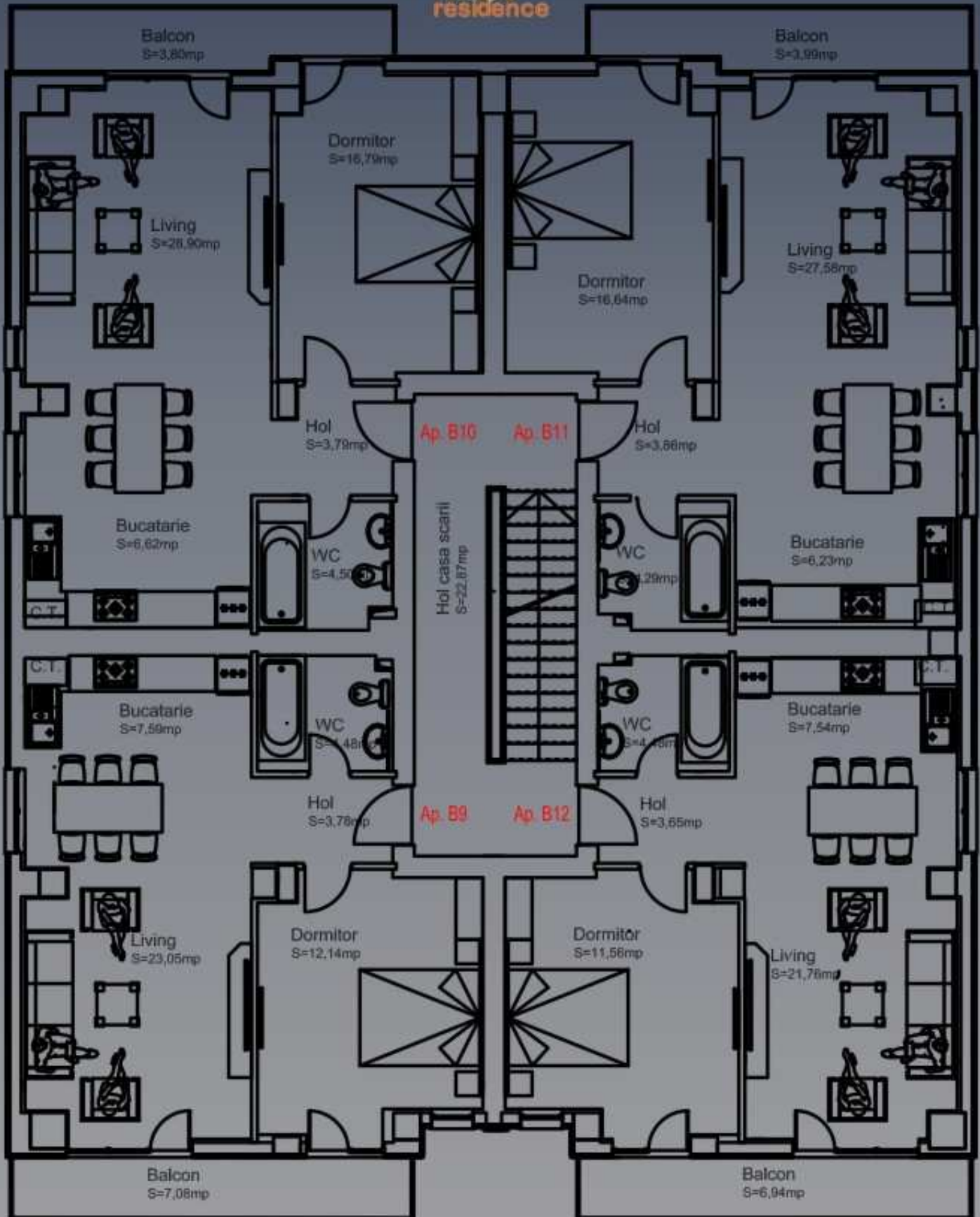


LEGENDA FINISAJE

- | | | |
|---|---|--|
| hol casa scarii
peretele gros
pereti / tavan vopsea lavabila | living / dormitor
peretele gros
pereti / tavan vopsea lavabila | bucatarie
peretele gros
fianza linie cuptor mobilier n-Balcon
pereti / tavan vopsea lavabila |
| hol
peretele gros
pereti / tavan vopsea lavabila | bai
peretele gros
fianza linie
tavan vopsea lavabila | balcon
peretele gros antitermura |

S construita = 320,16 mp
 Categoria de importanta "C" - normala
 Clasa de importanta III - normala
 Gradul III de rezistenta la foc

PLAN ETAJ 1

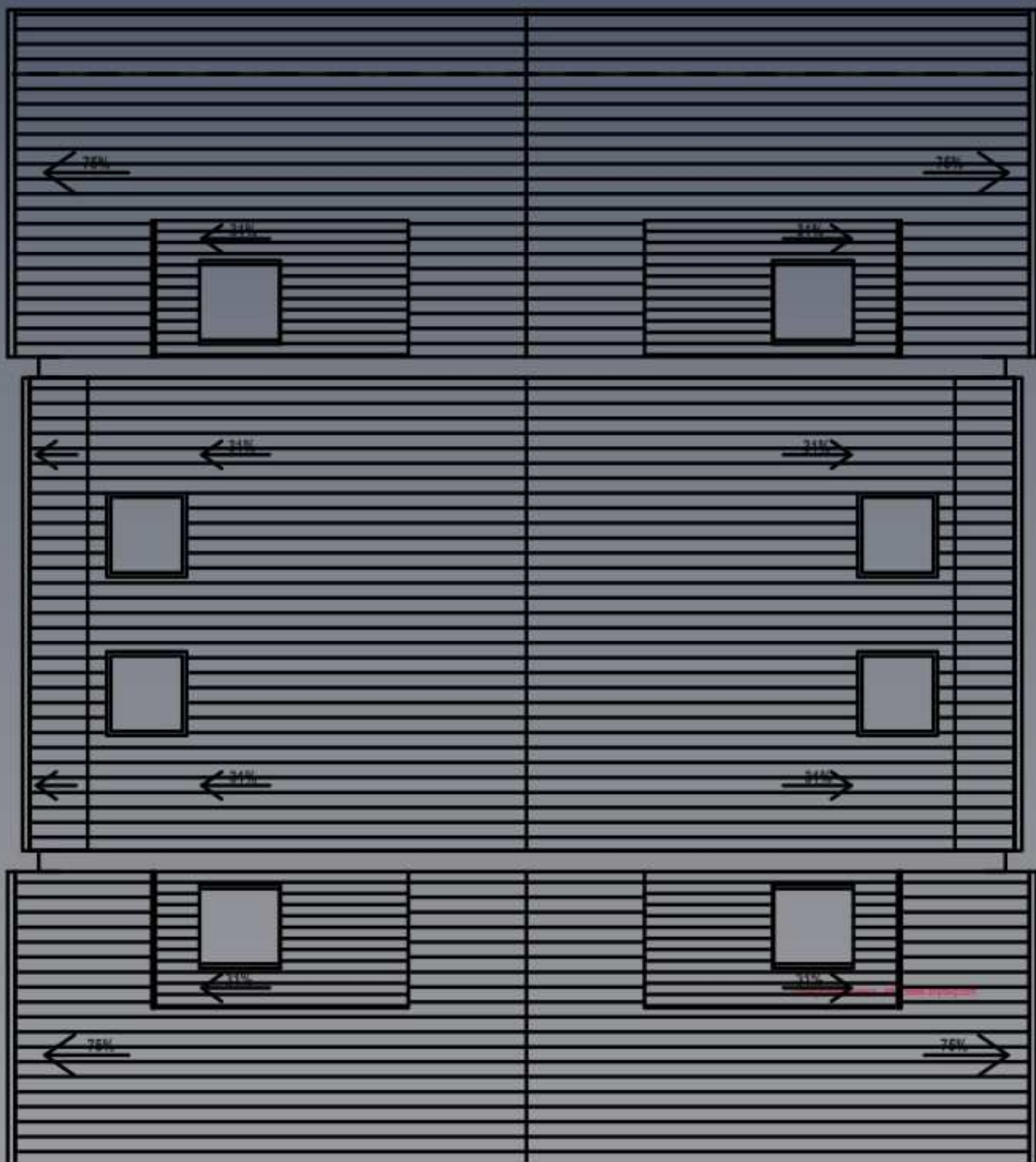


LEGENDA FINISAJE

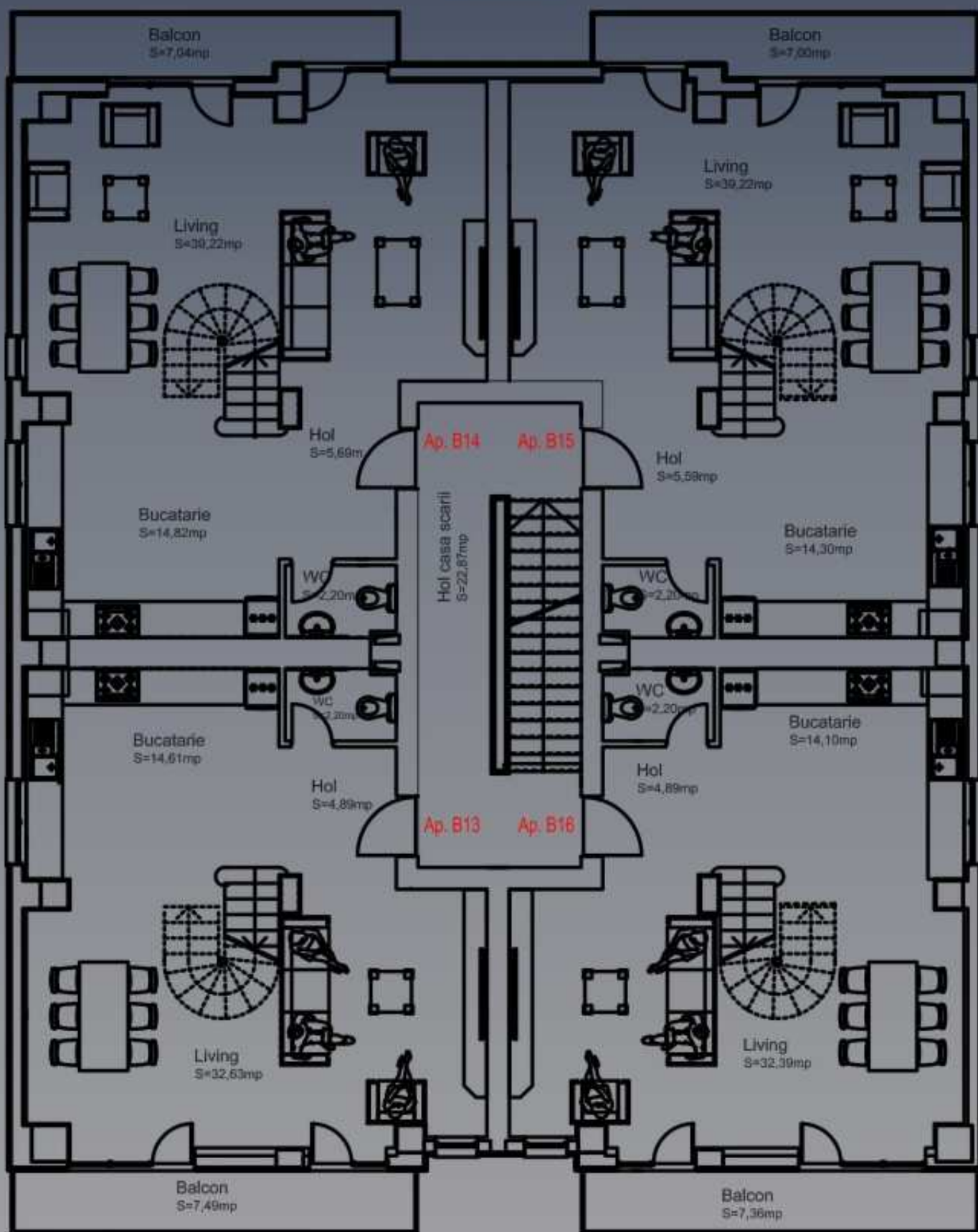
- | | | |
|--|--|---|
| hol casa scarii
pardoseala gresie
pereti / tavani vopsea lavabila | living / dormitor
pardoseala gresie
pereti / tavani vopsea lavabila | bucatarie
pardoseala gresie
lavare inle cupeti mobilei in-litzi
pereti / tavani vopsea lavabila |
| hol
pardoseala gresie
pereti / tavani vopsea lavabila | bale
pardoseala gresie
tavani h=2,10m
lavari vopsea lavabila | balcon
pardoseala gresie antiderapant |

S construita = 320,16 mp
Categori de importanta "C" - normala
Clasa de importanta III - normala
Gradul III de rezistenta la foc

PLAN ETAJ 2



PLAN INVELITOARE

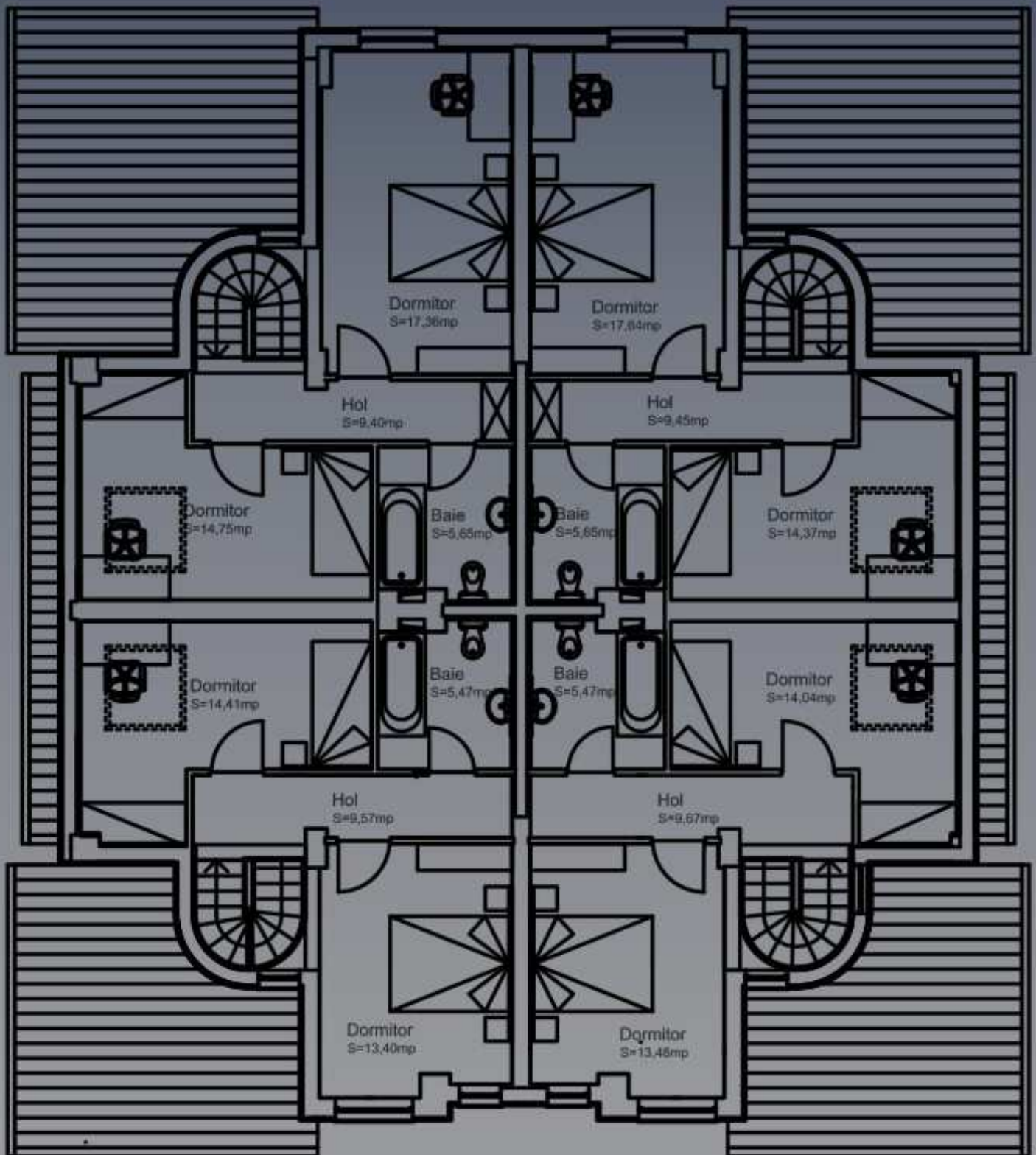


LEGENDA FINISAJE

- | | | |
|--|--|---|
| hol casa scarii
parterozata gresie
pereti / tavan vopsea lavabila | living / dormitor
parterozata gresie
pereti / tavan vopsea lavabila | bucatarie
parterozata gresie
falsatza zone cupat mobilier h=60cm
pereti / tavan vopsea lavabila |
| hol
parterozata gresie
pereti / tavan vopsea lavabila | bale
parterozata gresie
falsatza h=C. 50cm
tavan vopsea lavabila | balcon
parterozata gresie antiderapanta |

S construita = 320,16 mp
Categoria de importanta "C" - normala
Clasa de importanta III - normala
Gradul III de rezistenta la foc

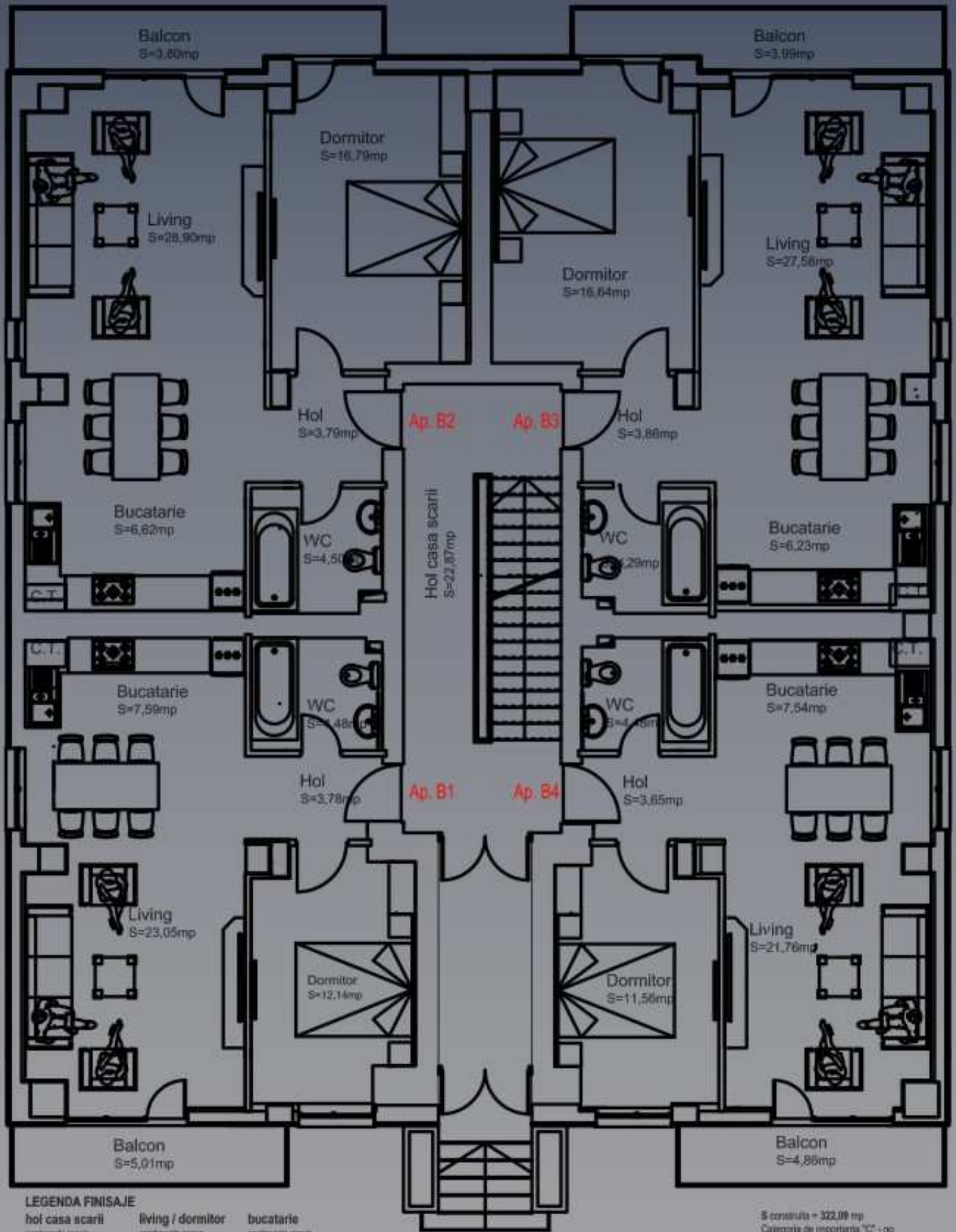
PLAN MANSARDA 1



hol casa scarii
 parchetului gros
 parch / scari vopsea lavabila
hol
 parchetului gros
 parch / scari vopsea lavabila
living / dormitor
 parchetului gros
 parch / scari vopsea lavabila
baie
 parchetului gros
 banoa 1x2,15m
 scari vopsea lavabila
bucatarie
 parchetului gros
 fiera 18m cupet mobilier melior
 parch / scari vopsea lavabila
balcon
 parchetului gros in calceputa

S construita = 221,58 mp
 Categoria de importanta „C” - normala
 Clasa de importanta B - normala
 Gradul III de rezistenta la foc

PLAN MANSARDA 2

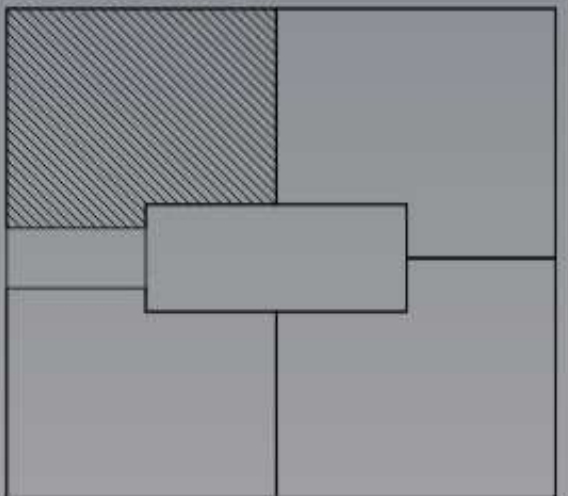
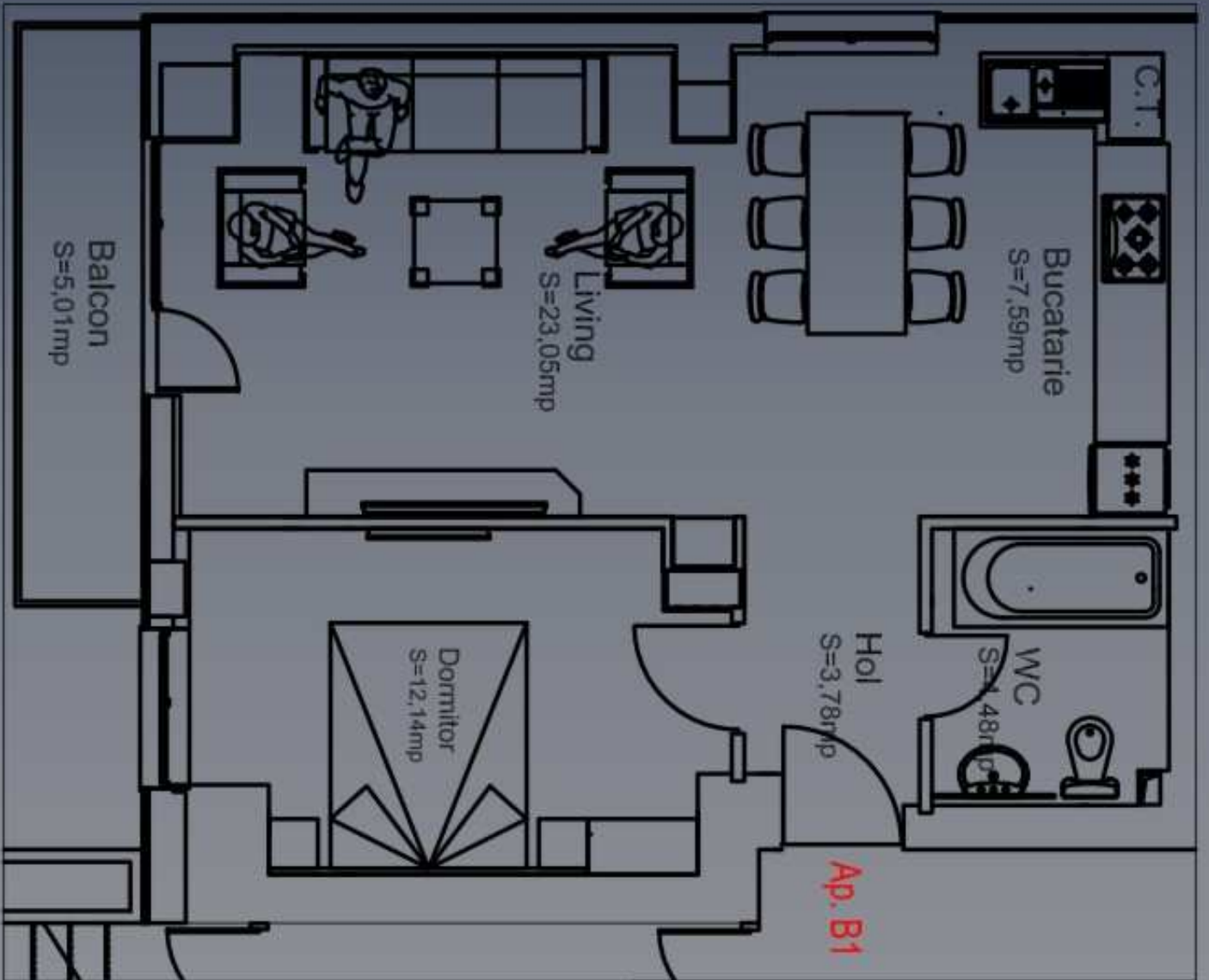


LEGENDA FINISAJE

- | | | |
|---|---|---|
| hol casa scarii
parter / living vopsea lavabila | living / dormitor
parter / living vopsea lavabila | bucatarie
parter / living vopsea lavabila |
| hol
parter / living vopsea lavabila | baie
parter / living vopsea lavabila | balcon
parter / living vopsea lavabila |

S construita = 322,09 mp
Categorie de importanta "C" - no
Clasa de importanta II - normala
Gratut III de rezistenta la foc

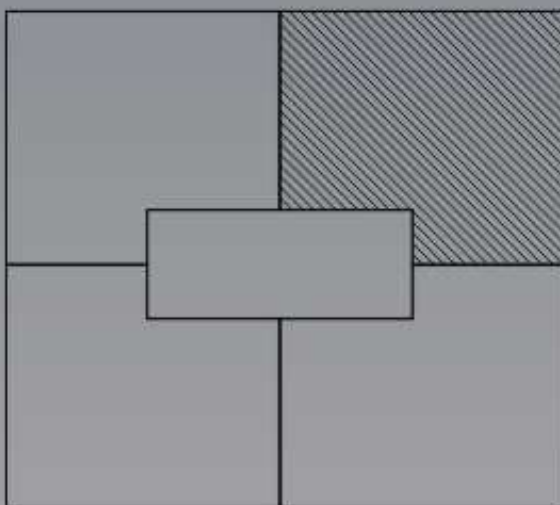
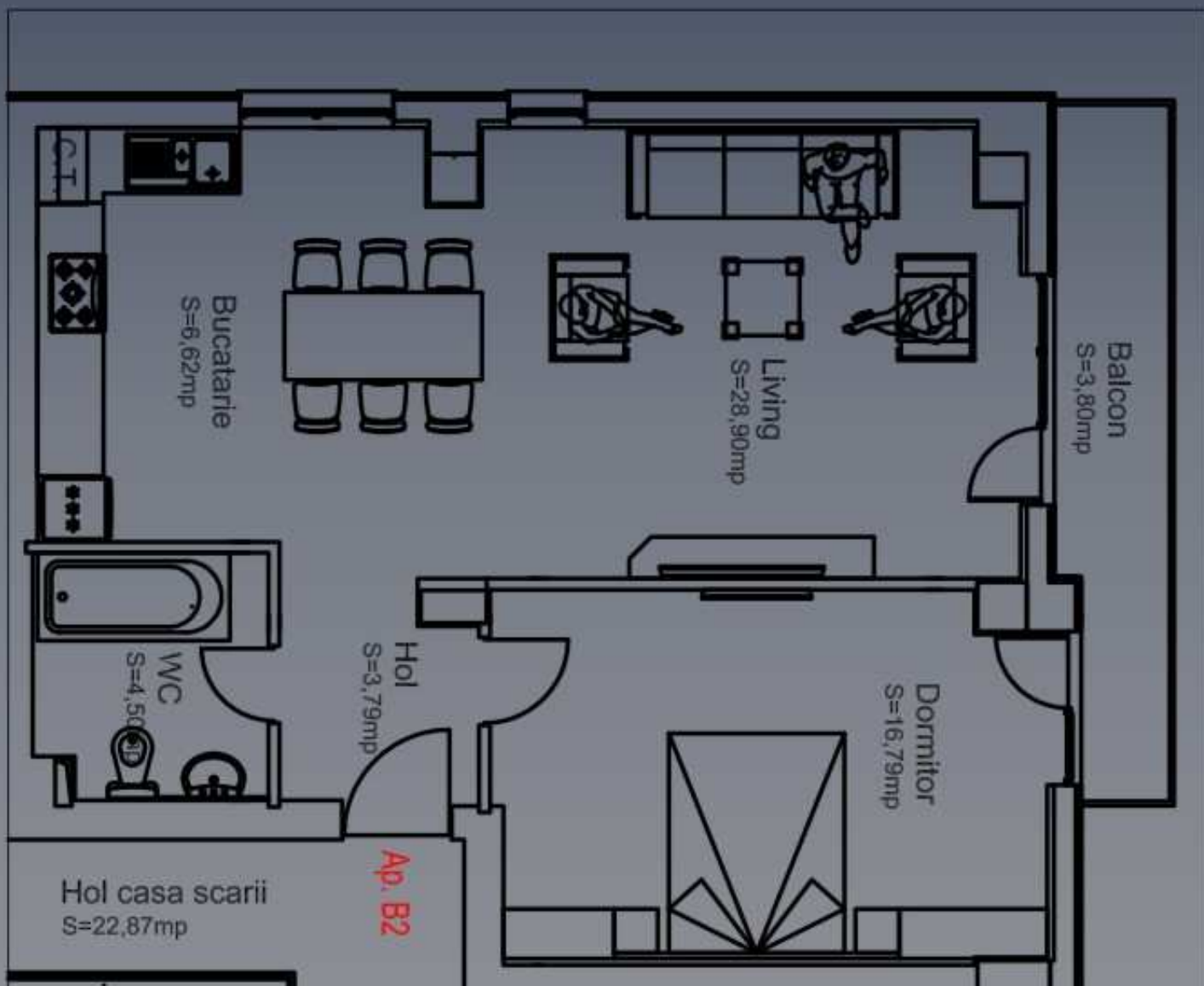
PLAN PARTER



APARTAMENT TIP 1

1 buc.

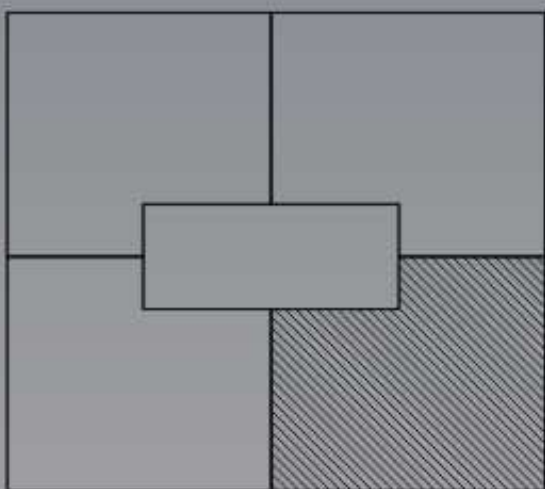
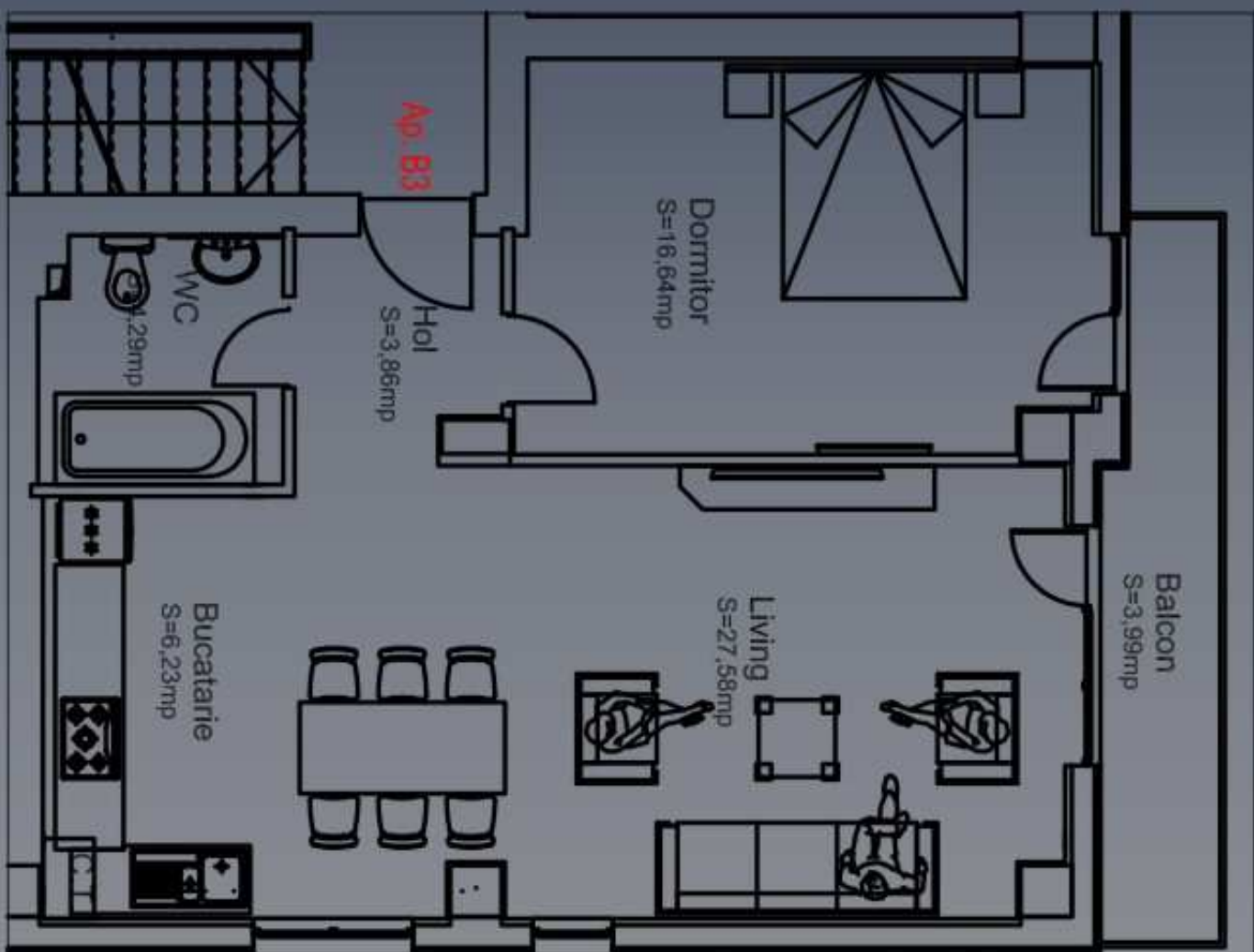
Sc: 66.36 m²



APARTAMENT TIP 2

3 buc.

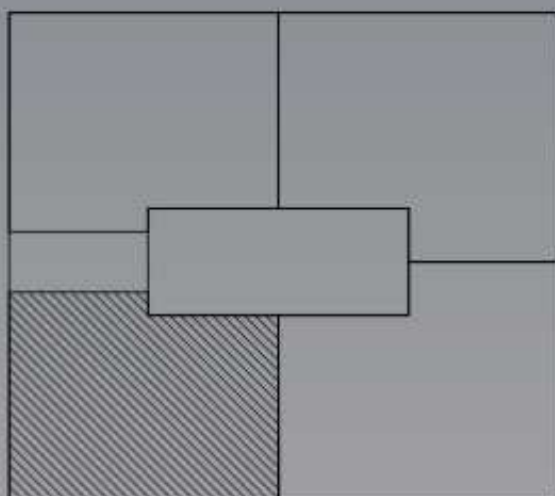
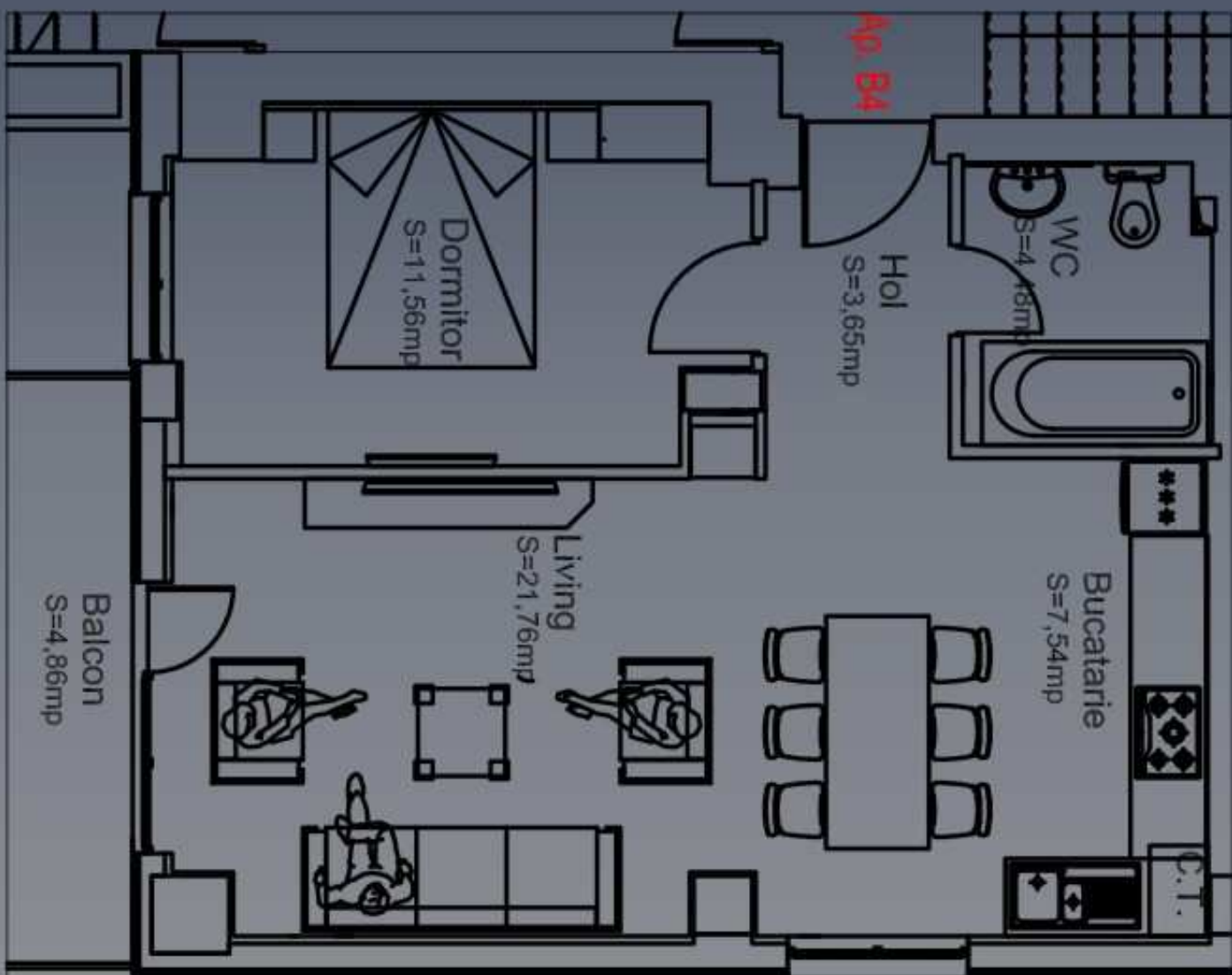
Sc: 79.41 m²



APARTAMENT TIP 3

3 buc.

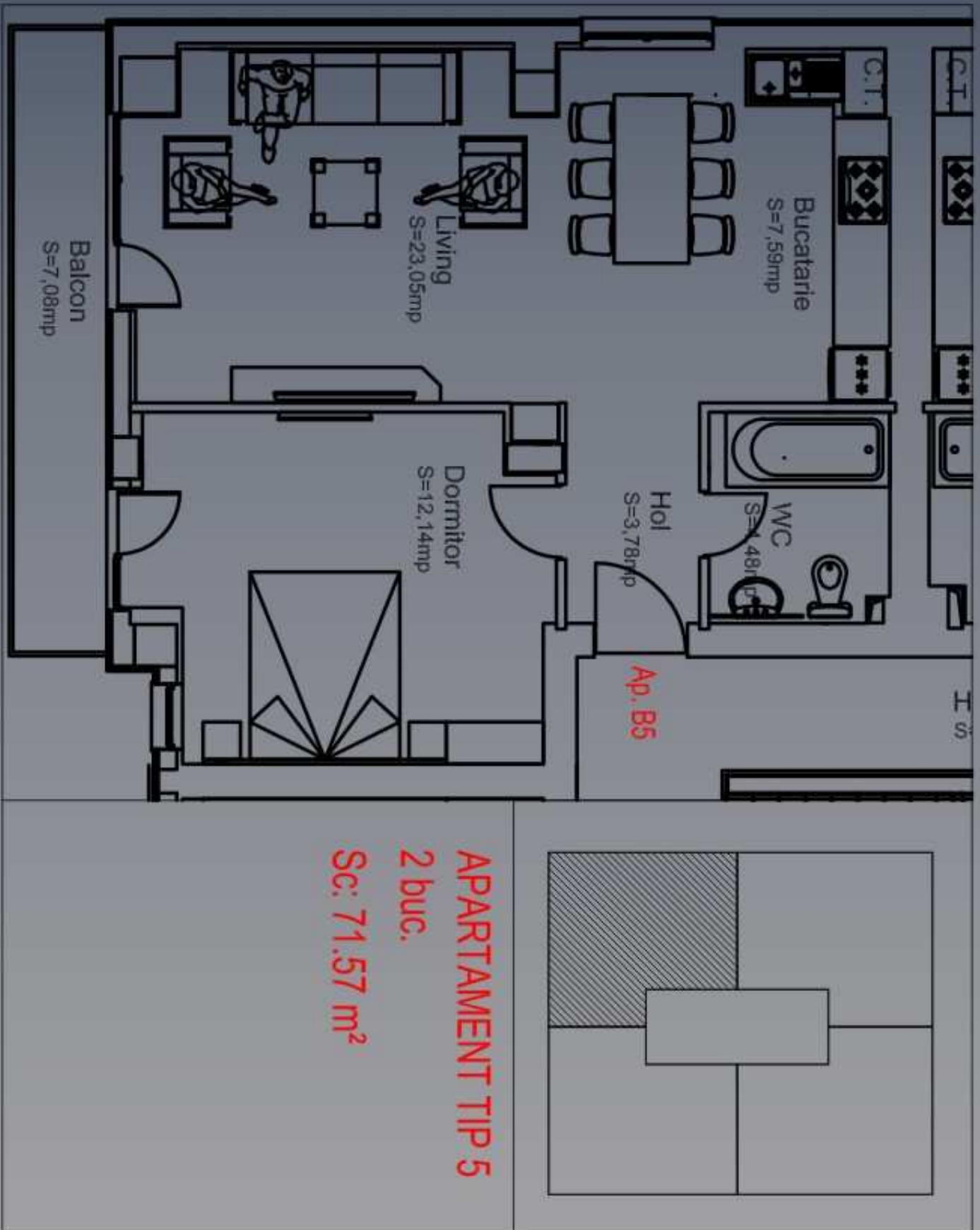
Sc: 79.41 m²

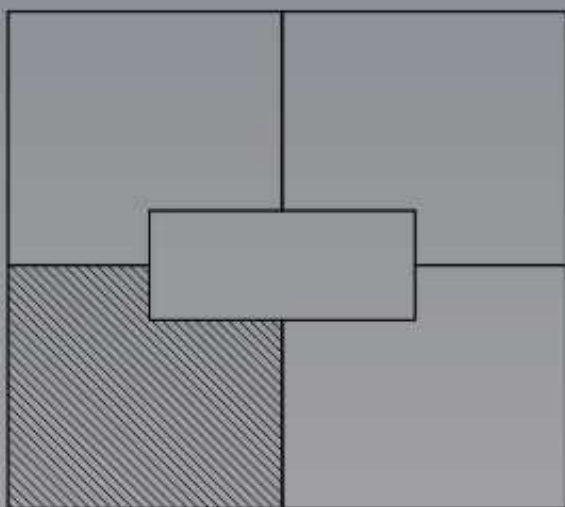
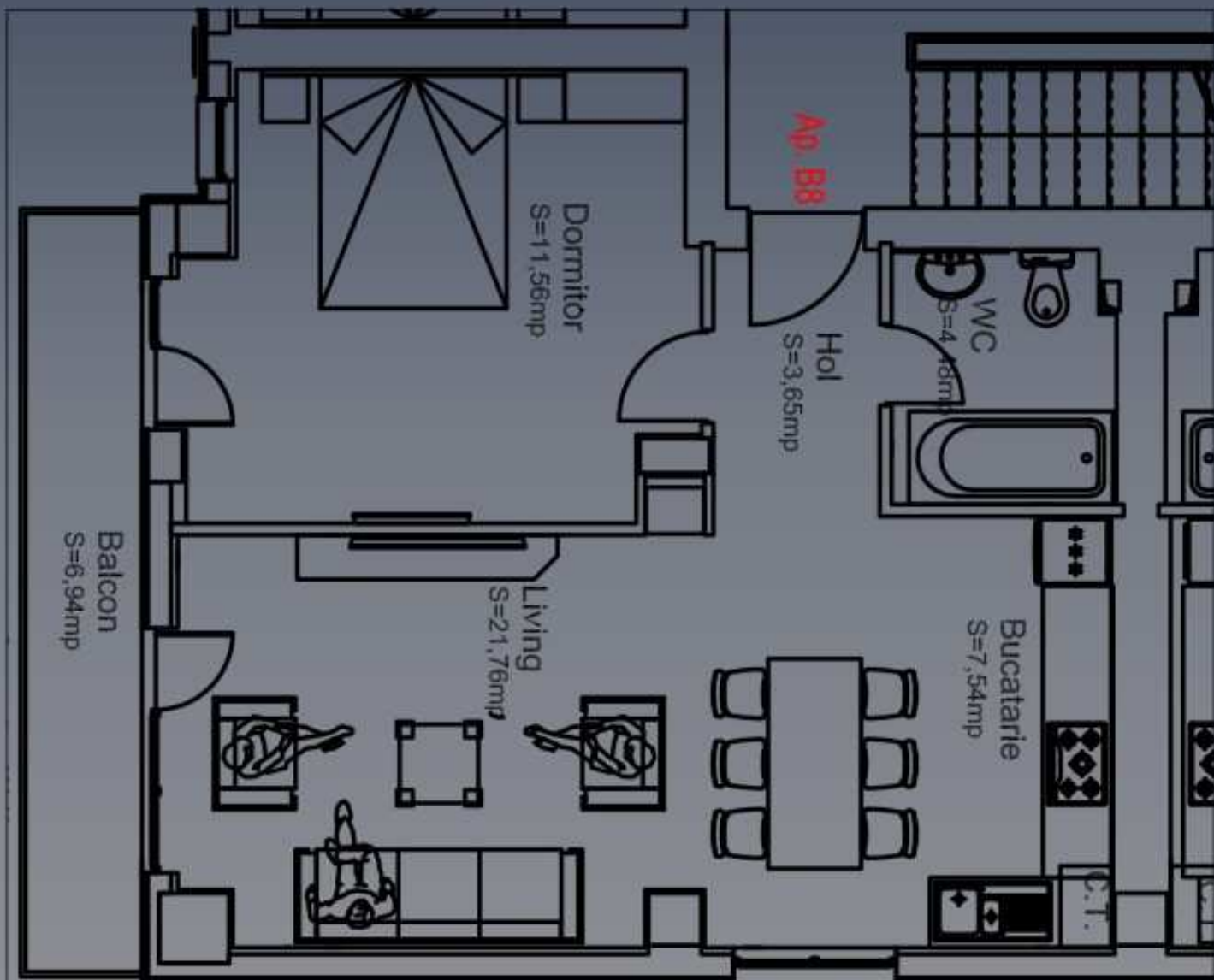


APARTAMENT TIP 4

1 buc.

Sc: 64.91 m²

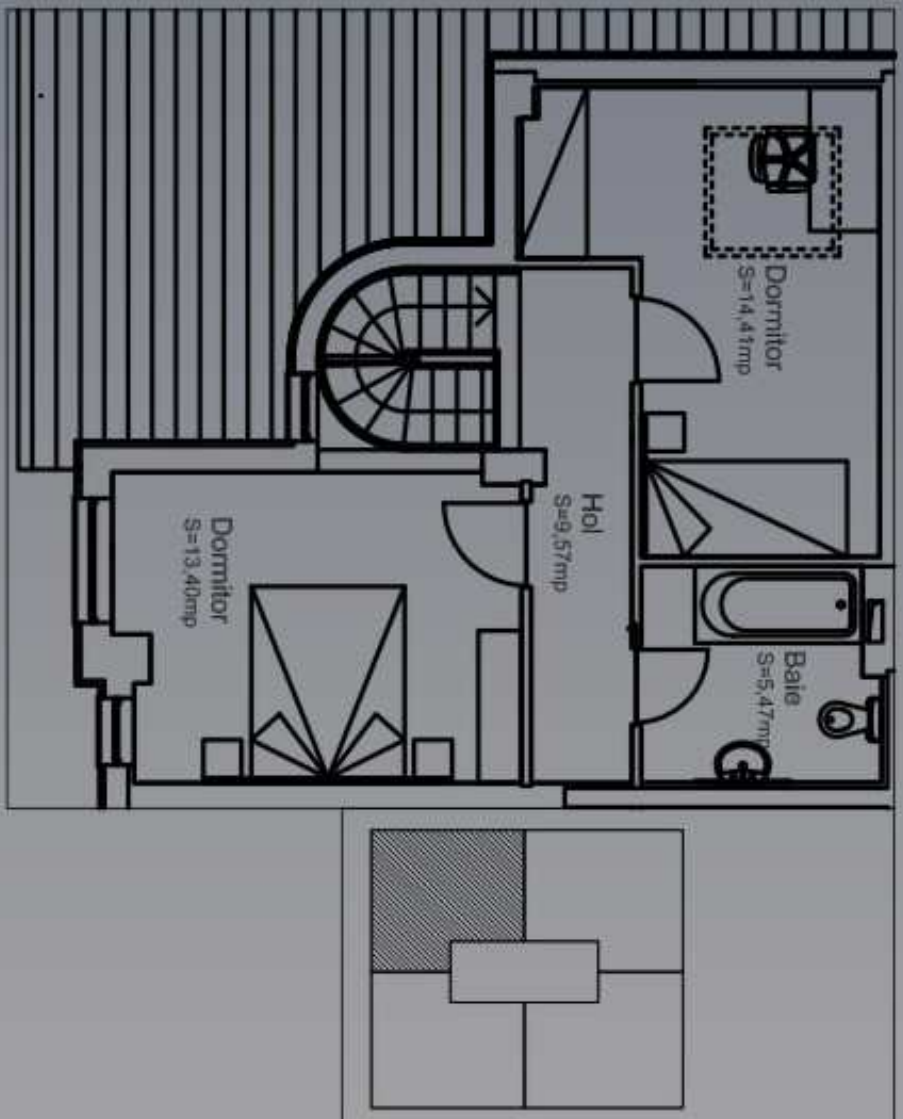
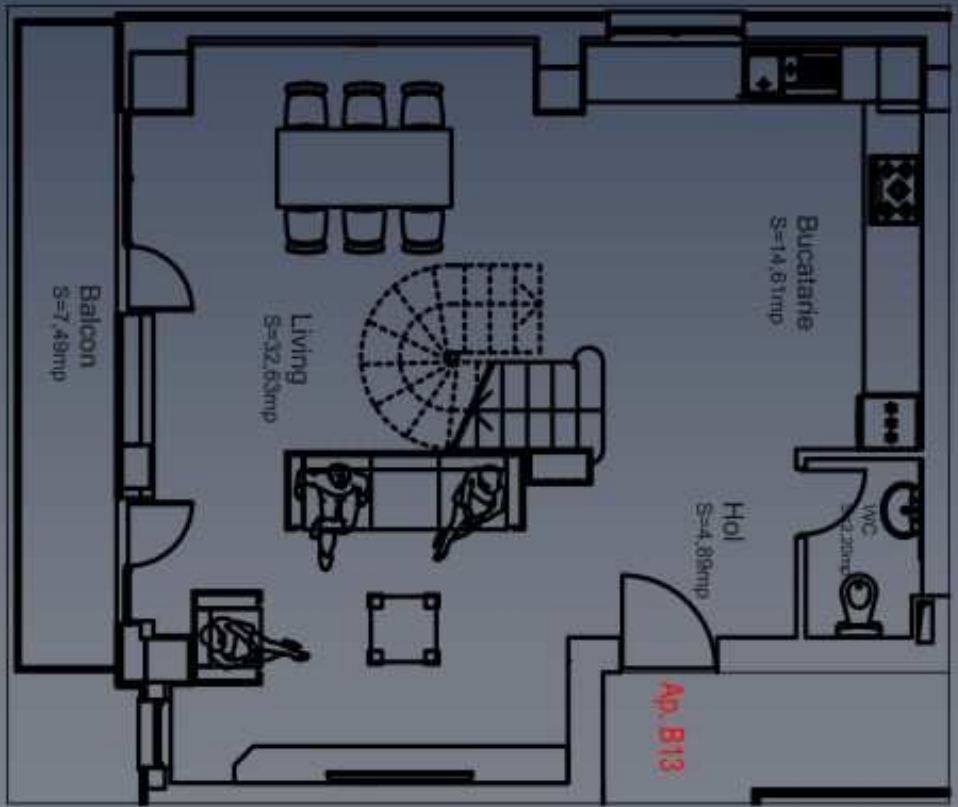




APARTAMENT TIP 6

2 buc.

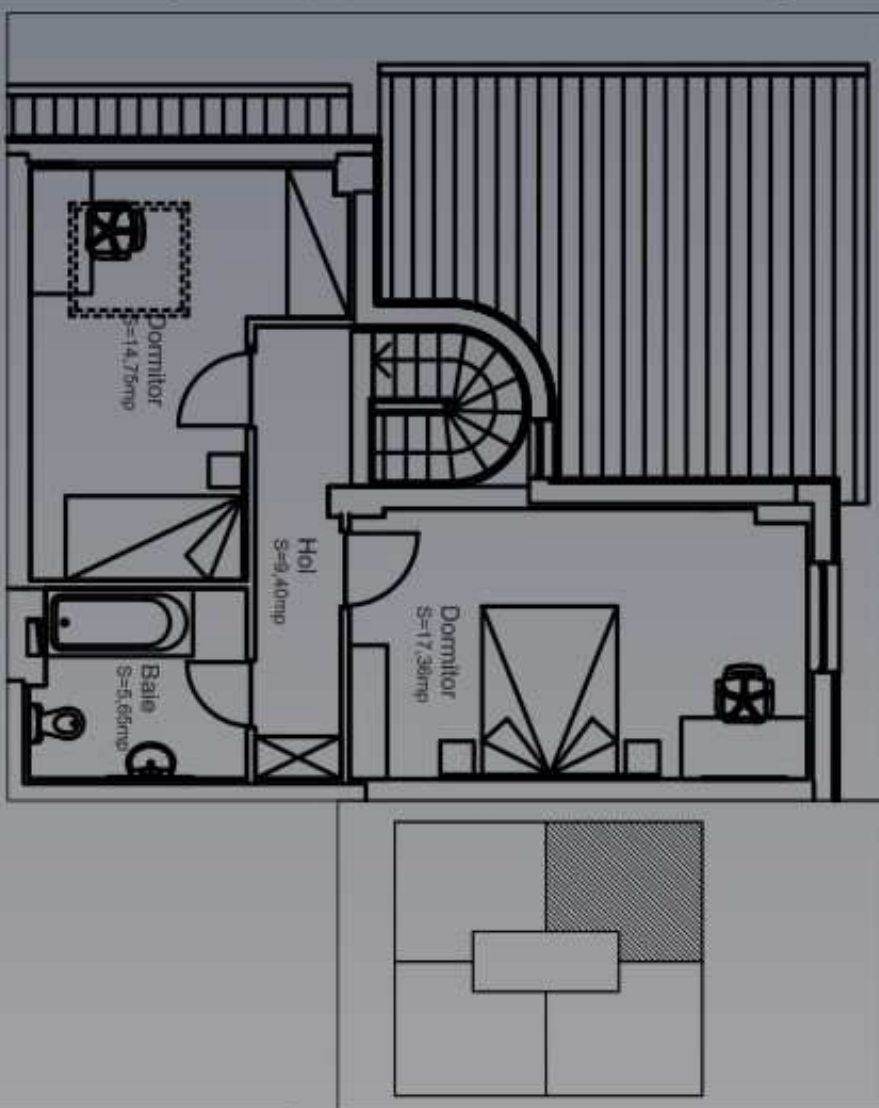
Sc: 70.39 m²



APARTAMENT TIP 7

1 buc. (duplex)

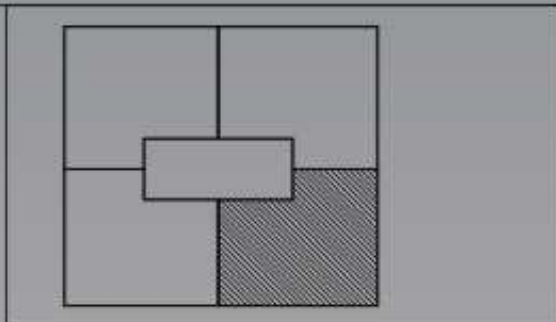
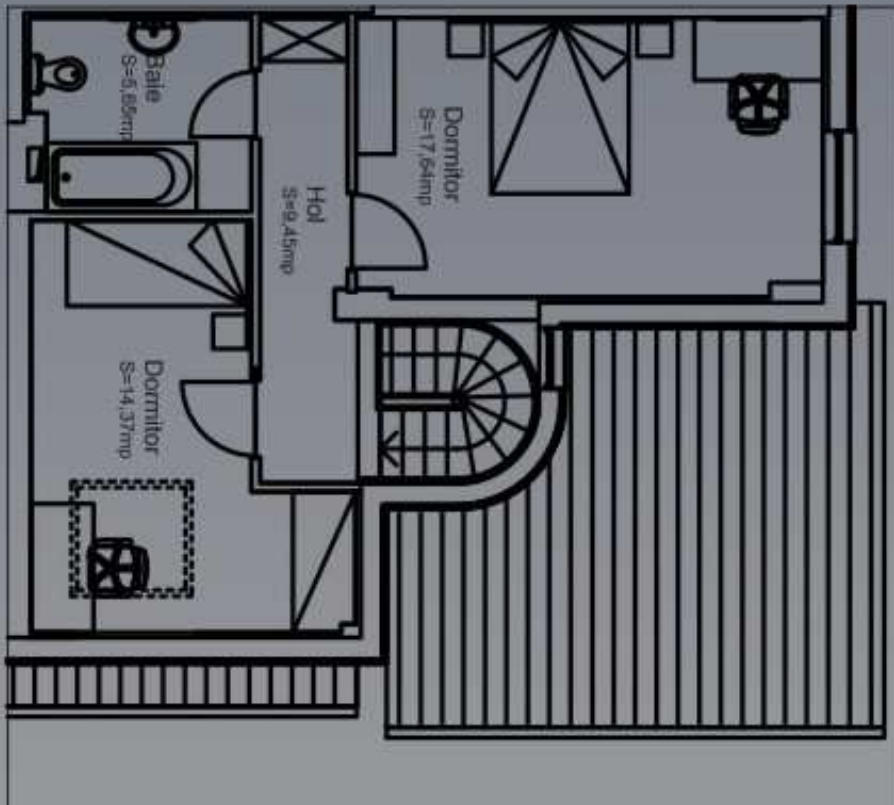
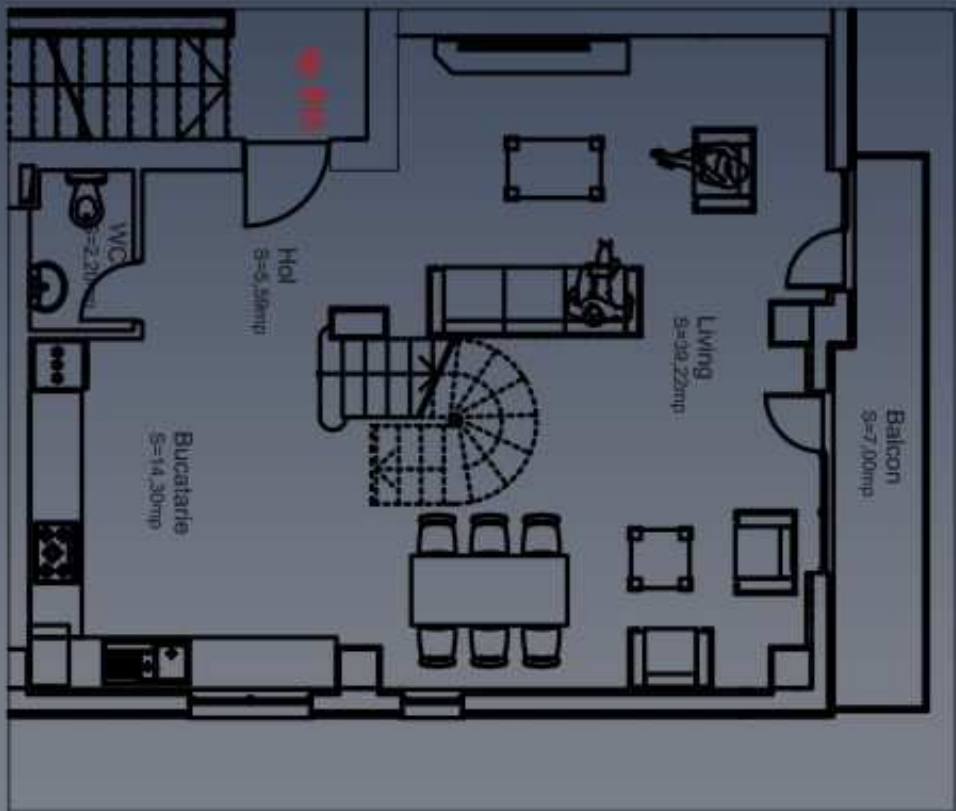
Sc: 71,86 m² + 53 m²
= 124,86 m²



APARTAMENT TIP 8

1 buc. (duplex)

Sc: 79.41 m² + 57.95 m²
 = 137.36 m²

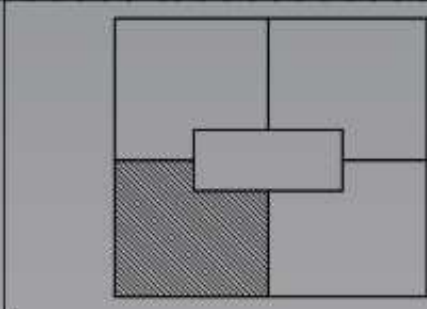
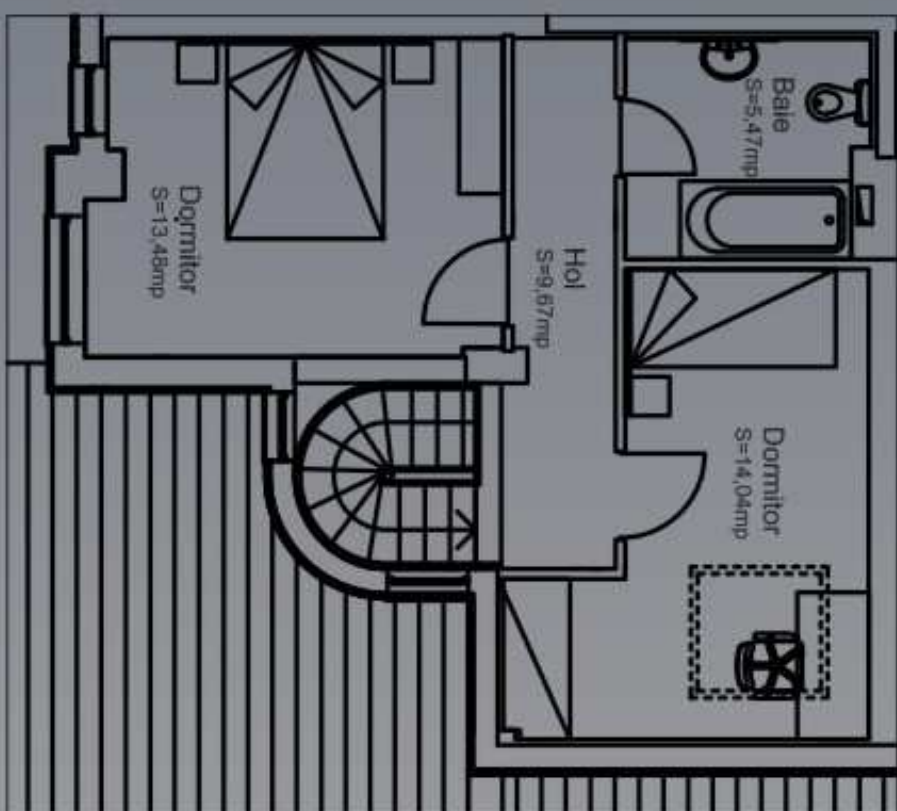
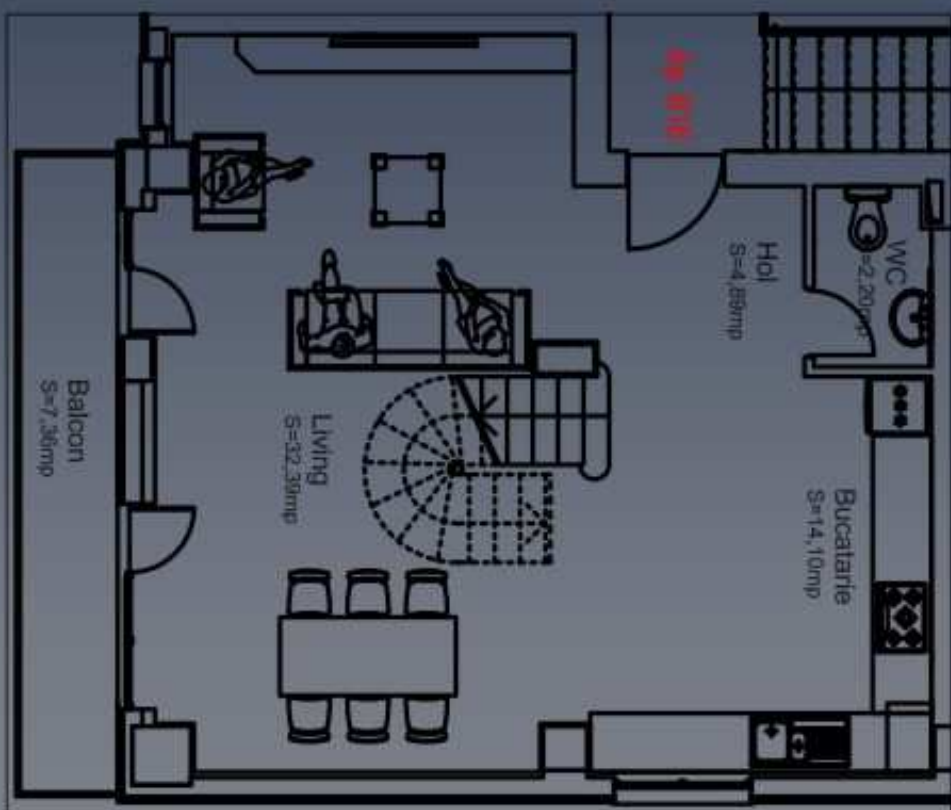


APARTAMENT TIP 9

1 buc. (duplex)

Sc: 75 m² + 57.8 m²

= 132.8 m²



APARTAMENT TIP 10

1 buc. (duplex)

Sc: 70.7 m² + 52.77 m²

= 123.47 m²

CONTACT

Va multumim pentru interesul fata de proiectul Timea Residence.
Suntem la dispozitia dumneavoastra cu detalii si informatii suplimentare :

Telefon : +4 0725.084.236

Email : timeainvestment@yahoo.com
office@timearesidence.ro

